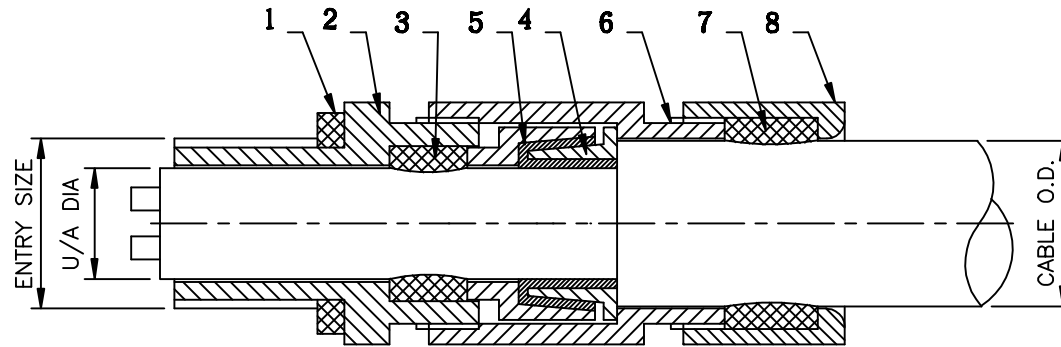


CIMFR CERT NO.: - CIMFR/TC/P/H656
 SUPPL. T.C. NO.: - CIMFR/TC/S/1237
 SUPPL. T.C. NO.: - CIMFR/TC/S/H164
 TYPE/CAT NO.: - KCE-**-I SERIES



CABLE GLAND SELECTION CHART (TABLE # A)

CAT.NO.	ENTRY SIZE (M)	ENTRY SIZE (ET)	ENTRY SIZE (NPT)	CABLE TYPE (IS:14494)	CABLE O.D.	CABLE U/A DIA.
KCE-04-I	M25x1.5P	1" ET	3/4" NPT	PLC2	MIN. 23MM MAX. 25MM	MIN. 12.7MM MAX. 14.7MM
KCE-05-I	M32x1.5P	1 1/4" ET	1" NPT	PLC3	MIN. 24MM MAX. 26MM	MIN. 13.2MM MAX. 15.2MM
KCE-05-I	M32x1.5P	1 1/4" ET	1" NPT	PLC4	MIN. 27.5MM MAX. 30 MM	MIN. 15.2MM MAX. 17.2MM
KCE-05-I	M32x1.5P	1 1/4" ET	1" NPT	PLC5	MIN. 27MM MAX. 29MM	MIN. 16.3MM MAX. 18.3MM
KCE-07-I	M40x1.5P	1 1/2" ET	1 1/4" NPT	PA3 6 SQ.MM.	MIN. 30.5MM MAX. 33.5MM	MIN. 19.6MM MAX. 21.6MM
KCE-11-I	M63x1.5P	2 1/2" ET	2 1/4" NPT	PA1 35 SQ.MM.	MIN. 52MM MAX. 55MM	MIN. 37.2MM MAX. 40.2MM
KCE-11-I	M63x1.5P	2 1/2" ET	2 1/4" NPT	PA1 25 SQ.MM.	MIN. 49MM MAX. 52MM	MIN. 34.1MM MAX. 37.1MM
KCE-11-I	M63x1.5P	2 1/2" ET	2 1/4" NPT	PA3 35 SQ.MM.	MIN. 48.5MM MAX. 51.5MM	MIN. 33.5MM MAX. 36.5MM

TECHNICAL DATA

ENCLOSURE :-
 Ex-d AS PER IS/IEC 60079-1:2007

PROTECTION :-
 IP-66 AS PER IS/IEC 60529:1989

GAS GROUPS, ZONE :-
 I (COAL MINES)

MATERIAL OF CONSTRUCTION :-
 BRASS NICKEL PLATED AS STANDARD

ORDERING CODE :-
 CAT. NO. FOLLOWED BY SIZE e.g. KCE-04-I M25x1.5

SIZE & CAT NO. :- TABLE # A

NO.	DESCRIPTION	QTY	REMARK
08.	COMPRESSION RING (NUT)	1	-
07.	OUTER BUSH	1	-
06.	GLAND BODY	1	-
05.	ARMOUR CLAMPING RING	1	-
04.	ARMOUR CLAMPING CONE	1	-
03.	INNER BUSH	1	-
02.	NIPPLE	1	-
01.	RUBBER WASHER	1	-
NO.	DESCRIPTION	QTY	REMARK

CLIENT		DRAWN	KBP	1.8.13	DESCRIPTION:-	
CONSULTANT		APP'D	HPB	1.8.13	FLAMEPROOF & WEATHERPROOF	
P.O.No.		CH'D	NPB	1.8.13	DOUBLE COMP.CABLE GLAND	
				SHT.NO.	REV.	DRG.NO.:-
				1 OF 1	0	L01

THE INFORMATION CONTAINED IN THIS DRAWING IS THE PROPERTY OF KAYSONS TECHNO EQUIPMENTS PVT. LTD. AND IS NOT TO BE COPIED OR MISUSED IN ANY WAY.

ISSUE	DATE	BY	MODIFICATION

KAYSONS 1802/7, G.I.D.C. ESTATE,
 TECHNO EQUIPMENTS PVT LTD V.U.NAGAR 388121. (GUJARAT)